

**Path to Integrated Academics  
& Training in ESOL  
Atlantic Technical College**

---

Florida's Integrated Career & Academic Preparation System (FICAPS)  
Institute

January 29, 2016

*Neeta Rancourt, Assistant Director  
Katherine Soli, Project Coordinator*



# Atlantic Technical College Opportunities

---

- ❖ *Technical Program Certificate(s)* with 37 High-Skill/High-Wage Adult Career Pathways for students in the following areas: (Health, Business Administration, IT, Advanced Manufacturing, Automotive and Technical Trades) at 2 campuses
- ❖ *Apprenticeship Program* (19 Different Trades statewide)
- ❖ *Adult General Education* – Adult Basic Education (ABE), GED<sup>®</sup> Preparation, Adult English for Speakers of Other Languages (ESOL), Applied Academics for Adult Education with Career Pathways leading to our technical programs and beyond at 3 campuses.

# Atlantic Technical College Opportunities

---

- ❖ *Industry Licenses and/or Credentials:* Since 2013 over 800 Postsecondary Credentials were attained
- ❖ *Articulated Postsecondary College Credit to the State College System*
  - Gold Standard Career Pathways Industry Certification Articulation Agreements based upon passing the program's industry credential exam
  - 116 credentials offered & aligned to the Gold Standard Pathways agreements



# Atlantic Technical College Opportunities

❖ *Career in a Year*—90% of our career/technical programs can be completed within one calendar year

- Programs are aligned to high-wage/high-skill jobs, not minimum wage openings
- Many programs are 3, 6 and 9 months in length
- Training to upgrade skills is available to workers looking to improve their current knowledge base and skill sets
- Face-to-Face, Online and Hybrid opportunities



# Atlantic Technical College Opportunities

---

## ❖ **Guarantee for Success Plan – *It is Our Commitment to Our Students!***

- Atlantic Technical College is committed to teaching the skills needed for the career our students want. We are proud to stand behind our graduates and the education they receive. To demonstrate our support, we offer the **Guarantee for Success Plan**.
- If a graduate/program completer of ATC does not pass the FLDOE approved, entry-level industry certification test in his or her field of study, the student is invited to return for additional training and/or test preparation at no additional cost for 9 weeks.



# Atlantic Technical College Opportunities

---

## ❖ Certification Reimbursement Plan – *Removing Financial Barriers!*



- Atlantic Technical College does not want the cost of taking a nationally-recognized certification or state licensure exam holding back our students.
- If our students pass a FLDOE approved industry certification or licensure exam aligned to their technical program of study, we will help pay for it. The College will **reimburse** up to a maximum of \$465 toward the cost of approved industry certification or licenses.

# Adult Career Pathways: Through the Years

---

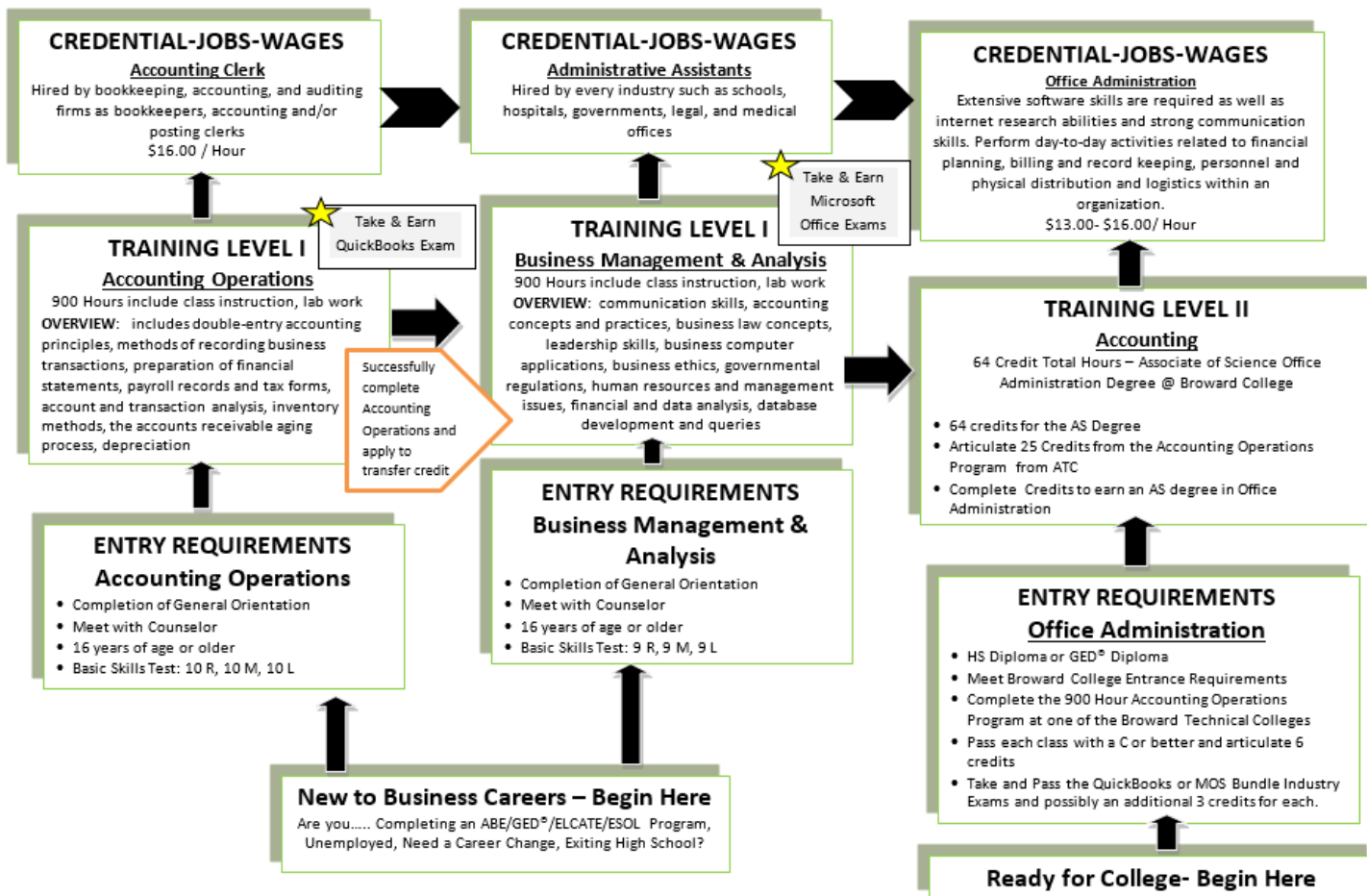
- ❖ Comprehensive Orientation
- ❖ Education & Career Pathways Plans with Students
- ❖ Case Management and Student Tracking
- ❖ Contextualizing Teaching and Learning
  - Health Science Programs Model
- ❖ Concurrent Enrollment (part-time Academic & part-time CTE)
- ❖ Bridge Programs for ESOL





## Accounting Operations/Business Management & Analysis Pathways

### Your Business Future Begins @ Atlantic Technical College





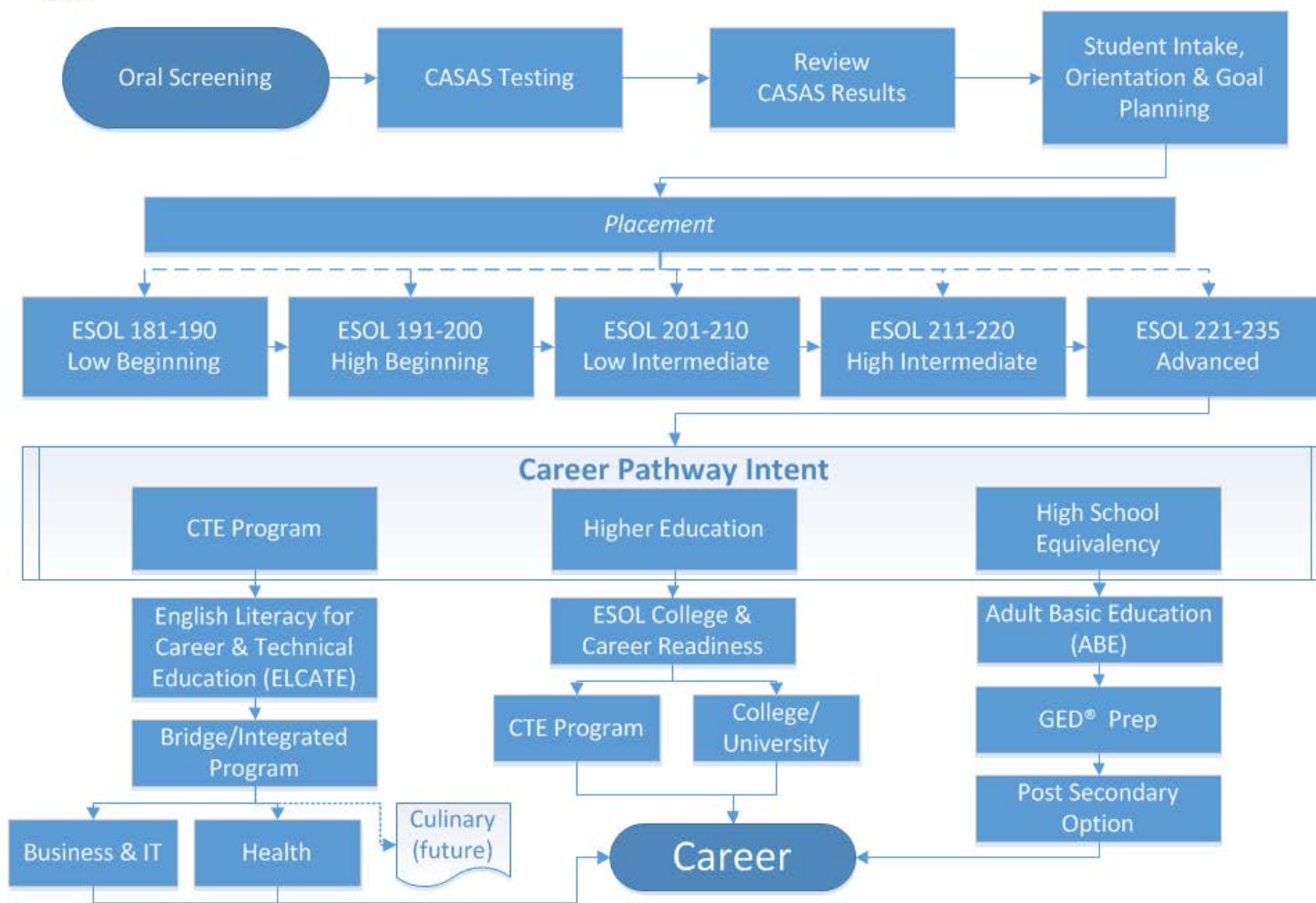
**Atlantic Technical College  
ESOL Bridge  
and Integrated Model**

---

**for Business/Information Technology and Health**



# English Language Learner (ELL) Pathways



	<b>ESOL Integrated Business/IT</b>	<b>ESOL Bridge Business/IT</b>	<b>ESOL Bridge Health</b>
<b>Instruction Model</b>	Team Teaching Model	1 Teacher – Contextualized Teaching & Learning with CTE Collaboration	1 Teacher – Contextualized Teaching & Learning with CTE Collaboration
<b>Schedule</b>	Split-day/co-enrolled AM—Business CTE class PM—ELL Business/IT	AM—English/Basic Skills PM—ELL Business/IT	AM—English/Basic Skills PM—ELL Health
<b>Curriculum Design</b>	Concurrent ELL support class to enhance student success	<ul style="list-style-type: none"> <li>Contextualized English/Basic Skills instruction with career pathways activities integrated into coursework</li> <li>Contextualized Business ELL instruction</li> </ul>	<ul style="list-style-type: none"> <li>Contextualized English/Basic Skills instruction with career pathways activities integrated into coursework</li> <li>Contextualized Health ELL instruction</li> </ul>
<b>Materials</b>	<ul style="list-style-type: none"> <li>CTE books</li> <li>English For Business Text</li> <li>Authentic Unique Instructor designed thematic instruction developed with success coach</li> </ul>	<ul style="list-style-type: none"> <li>English For Business Text</li> <li>Authentic Unique Instructor designed thematic instruction developed with success coach</li> </ul>	<ul style="list-style-type: none"> <li>English For Nursing Text</li> <li>Authentic Unique Instructor designed thematic instruction developed with success coach</li> </ul>
<b>Exit Goal</b>	Varies by program. Students may move from part-time to full-time decreasing the time to reach program completion.	TABE after 9-18 weeks with transition to ABE/AAAE, as applicable and/or Integrated model or full-time CTE	TABE after 18 weeks with transition to ABE/AAAE, as applicable and/or CTE Enrollment
<b>Program Goals</b>	Have more students complete ATC programs and be career ready	Have more students complete ATC programs and be career ready	Motivate students and ease transition to higher level academic and career courses

# Designed to Address Needs of ELLs

---

- ❖ **Reading a large textbook** → there will be a small textbook but most of the materials in the class will be designed in manageable sizes by the instructor and success coach
- ❖ **Studying efficiently and effectively** → the BRIDGE class and INTEGRATED support class will teach note-taking skills and studying strategies
- ❖ **Taking Multiple Choice Tests** → Test taking strategies will be taught, as well as “training” style quizzes that will help students build their confidence testing in a nonthreatening environment
- ❖ **Using Career Terminology** → the students will be heavily immersed in career terminology and vocabulary so they become comfortable in the usage
- ❖ **Communicating in the Workplace** → Verbal, Non-verbal, and written communication will be integrated into the course

# Student Highlights

---

- ❖ ***Galina** who was in the Business Bridge, is a student from Russia who worked for 20 years as an accountant in a service company. She recently retired, sold her property in Russia and immigrated to the United States. Galina has completed the Business Bridge and is currently in the Accounting program. Upon completion, Galina hopes to find a job as an accountant.*
- ❖ ***Chongbin**, a native of South Korea, worked as a mathematics instructor. He has been living in the United States for about five months and wanted to study business management. He has also completed the Bridge program. After serious and in-depth discussions with his wife, Chongbin decided to change career paths because his scores were so high and is going to study nursing. He is currently attending TEAS Preparation classes.*
- ❖ ***Sueli** has lived in the United States for several years. She comes from Brazil and wants to study business management. Sueli has transferred from the ESOL Bridge class to a GED® Program to further her studies.*

# Student Highlights

---

- ❖ ***Maili** is a native of Cuba who came to the United States just eight months ago. She is a dedicated student who, through her enthusiasm and positive outlook, motivates the entire class. She has completed the Health Bridge and is enrolled in Applied Academics for Adult Education (AAAE) to further who studies. Her plan is to enter the LPN program in April.*
- ❖ ***Flavio** completed the ESOL College and Career Readiness program and transitioned directly to the Network Support Services program. His CTE teacher has said he is one of the best Network Support Services students he has had.*

# Challenges/Lesson Learned

---

- Push Back from Teachers
- Right Teacher
- Appropriate Placement
- Financial Aid/Residency
- Recruitment and Promotion



# Next Steps

---

- Full Integrated Model
- Expansion to Culinary
- Statewide Resource





# Questions

---

