



FLORIDA
DEPARTMENT *of*
ECONOMIC
OPPORTUNITY

Supplemental Nutrition Assistance Program (SNAP)

Employment & Training Program



What is SNAP

- Supplemental Nutrition Assistance Program (SNAP, formerly known as the Food Stamp Program)
 - Offers nutrition assistance to millions of eligible individuals and families
- Funded by the U.S. Department of Agriculture, Food and Nutrition Services (FNS)
- Benefits are issued by the Department of Children and Families (DCF)

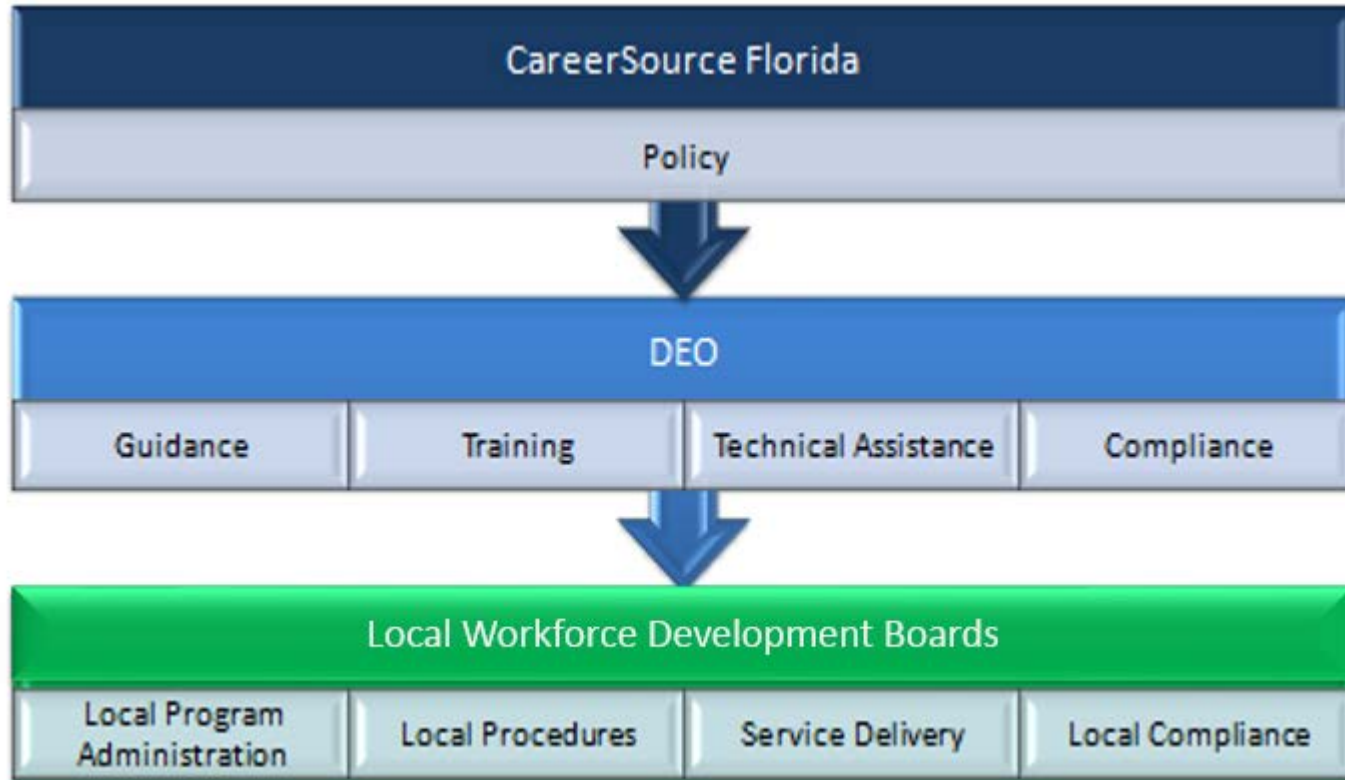


What is SNAP E & T

- The program is designed to help SNAP E&T participants gain skills, training, work, or experience that will increase self-sufficiency
- DCF determines a participant's eligibility to participate
- DEO administers the SNAP E&T program
- The Local Workforce Development Boards deliver program services to SNAP participants



Florida's Workforce System



Florida's ABAWDS

- Approximately 2 Million households receive SNAP Benefits
- 3.7 Million individuals receive SNAP benefits
- Estimated that approximately 563,507 are ABAWDS who will be referred for SNAP E&T services during this program year



Florida's SNAP E&T Program

Mandatory ABAWD Participation

- Able-Bodied Adults Without Dependents (ABAWDs) receiving food assistance
- Ages 18 – 49
- Time limits on food assistance
 - *3 month time limit in a 3-year time frame*
- Sanctions for non-compliance



Program Components

- State E&T programs must include at least one of the following program components:
 - Assessments
 - Job search programs
 - Job search training
 - Workfare programs
 - Work experience
 - Vocational training
 - WIOA & TAA Programs
 - Basic Adult Education
 - GED Prep
 - ESOL
 - Self-Employment



Program Components

- ABAWDs are required participate in “allowable” work components available at the career centers across the state in order to maintain eligibility to receive food assistance.
- Services offered by the LWDBs include:
 - Assessments
 - Job Search & Job Search Training
 - Work Experience
 - *Referrals to Education and Training*



Local Workforce Development Boards (LWDBs)

- LWDBs are responsible for delivering E&T program components to ABAWDs
- Based on the availability of funding, LWDBs may fund education services provided to ABAWDs
- LWDBs may refer ABAWDs to receive the following education services:
 - Adult Basic Education
 - High School Completion or General Education Development
 - Post-Secondary Education
 - English for Speakers of Other Languages
 - Education combined with other program components

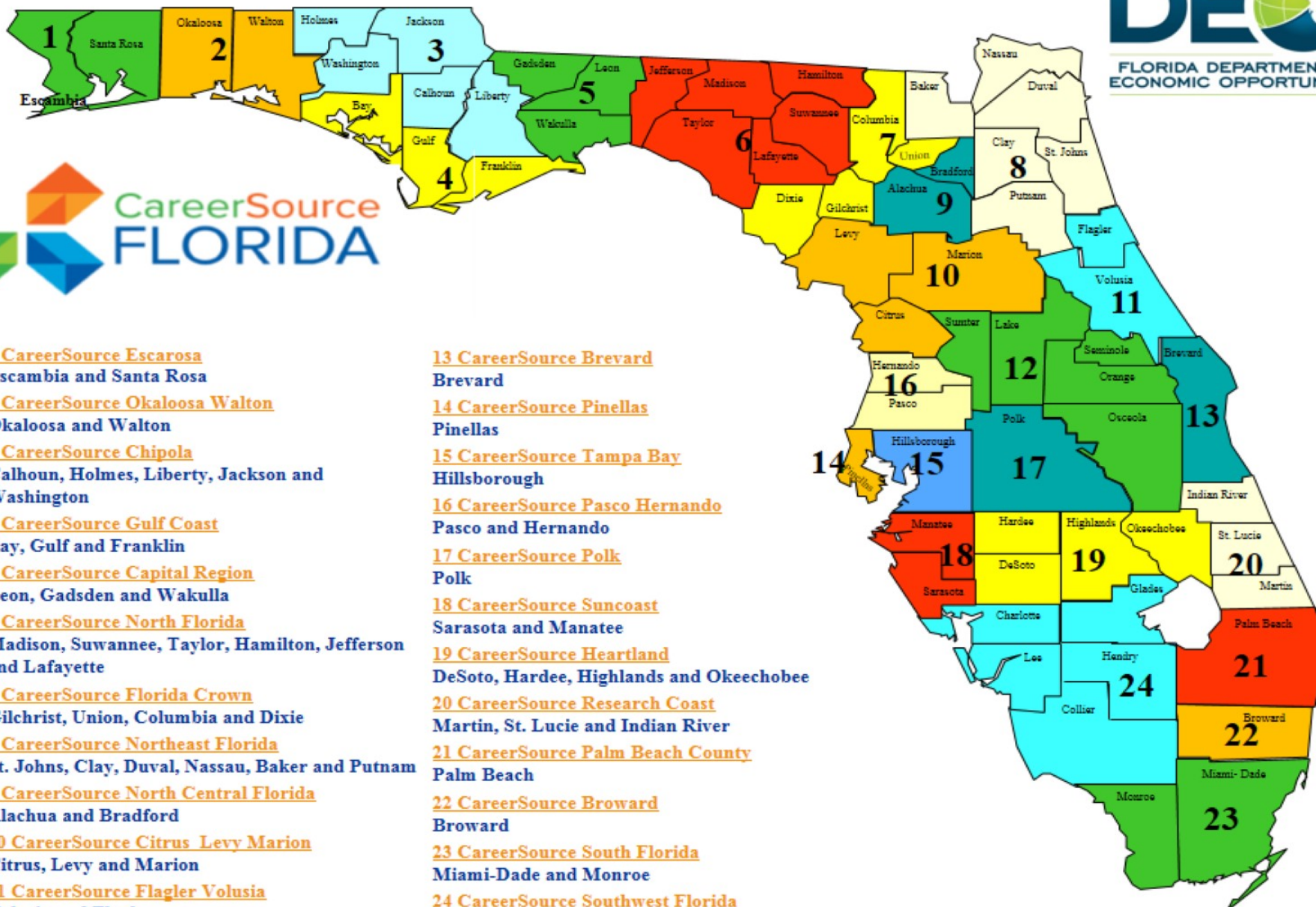


Local Workforce Development Boards (LWDBs)

- LWDBs may refer ABAWDS to the following training services:
 - Vocational Training
 - WIOA
 - TAA
- LWDBs are responsible for tracking and reporting on ABAWD participation
- The LWDBs, DEO and DCF collaborate closely to ensure ABAWDS are given opportunities to comply with the program requirements



Florida's CareerSource Service Network



1 CareerSource Escarosa
Escambia and Santa Rosa

2 CareerSource Okaloosa Walton
Okaloosa and Walton

3 CareerSource Chipola
Calhoun, Holmes, Liberty, Jackson and Washington

4 CareerSource Gulf Coast
Bay, Gulf and Franklin

5 CareerSource Capital Region
Leon, Gadsden and Wakulla

6 CareerSource North Florida
Madison, Suwannee, Taylor, Hamilton, Jefferson and Lafayette

7 CareerSource Florida Crown
Gilchrist, Union, Columbia and Dixie

8 CareerSource Northeast Florida
St. Johns, Clay, Duval, Nassau, Baker and Putnam

9 CareerSource North Central Florida
Alachua and Bradford

10 CareerSource Citrus Levy Marion
Citrus, Levy and Marion

11 CareerSource Flagler Volusia
Volusia and Flagler

12 CareerSource Central Florida
Orange, Osceola, Seminole, Lake and Sumter

13 CareerSource Brevard
Brevard

14 CareerSource Pinellas
Pinellas

15 CareerSource Tampa Bay
Hillsborough

16 CareerSource Pasco Hernando
Pasco and Hernando

17 CareerSource Polk
Polk

18 CareerSource Suncoast
Sarasota and Manatee

19 CareerSource Heartland
DeSoto, Hardee, Highlands and Okeechobee

20 CareerSource Research Coast
Martin, St. Lucie and Indian River

21 CareerSource Palm Beach County
Palm Beach

22 CareerSource Broward
Broward

23 CareerSource South Florida
Miami-Dade and Monroe

24 CareerSource Southwest Florida
Charlotte, Collier, Glades, Hendry and Lee

Questions



FLORIDA DEPARTMENT *of* ECONOMIC OPPORTUNITY



Division of Workforce Services One-Stop & Program Support Program Management Unit

Shila Salem, SNAP E&T, Program Manager

Shila.Salem@deo.myflorida.com

(850) 245-7466

Morena Owens, SNAP E&T Program, Policy Consultant

Morena.Owens@deo.myflorida.com

(850) 921-3316



FLORIDA DEPARTMENT *of* ECONOMIC OPPORTUNITY

