



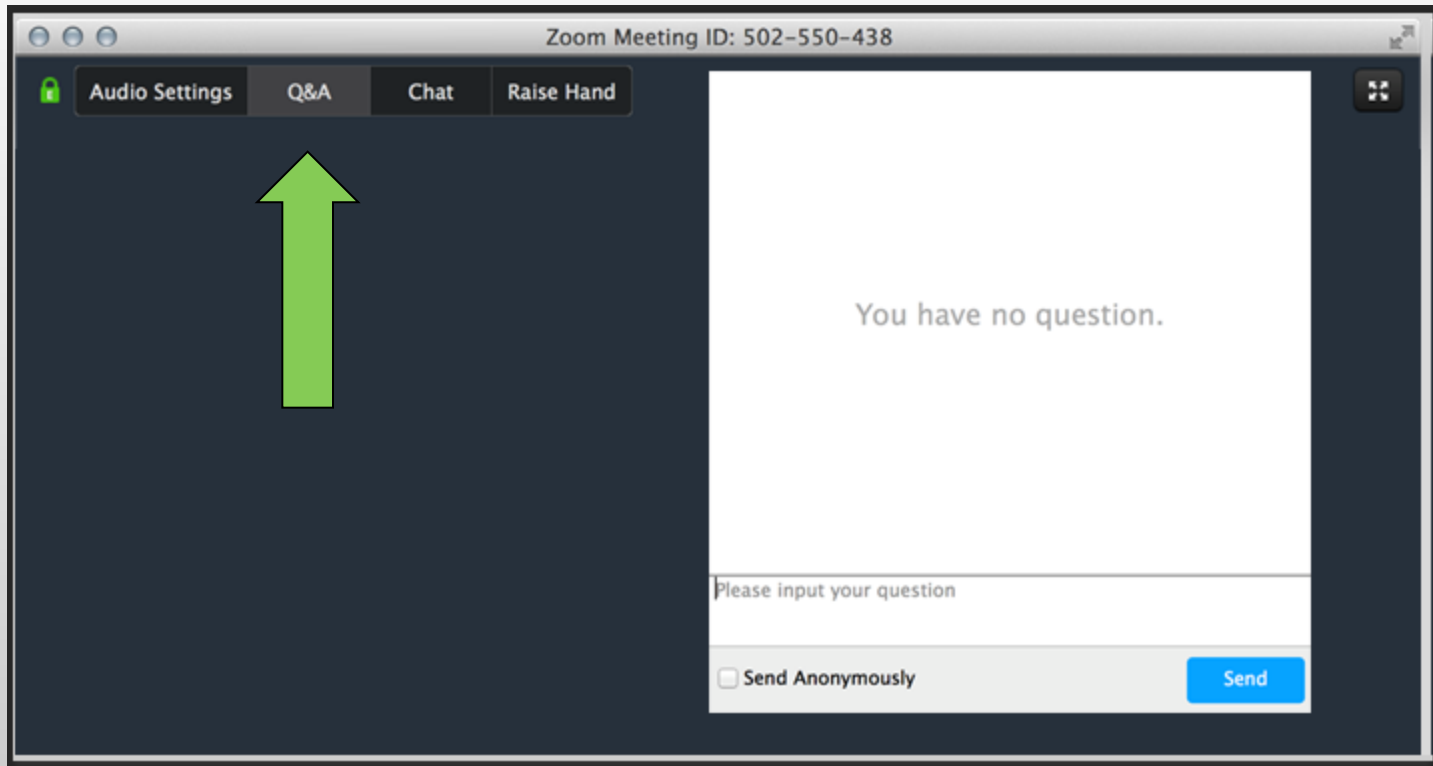
INSTITUTE FOR THE PROFESSIONAL
DEVELOPMENT OF ADULT EDUCATORS

Digital Literacy & Distance Learning

www.floridaipdae.org



- If you have a question, please type it into the **Q&A** option.



- Attendee microphones will be muted. You will be in **listen only** mode.
- Today's presentation is being **recorded**. It will be archived and available on the IPDAE website within 48 hours.

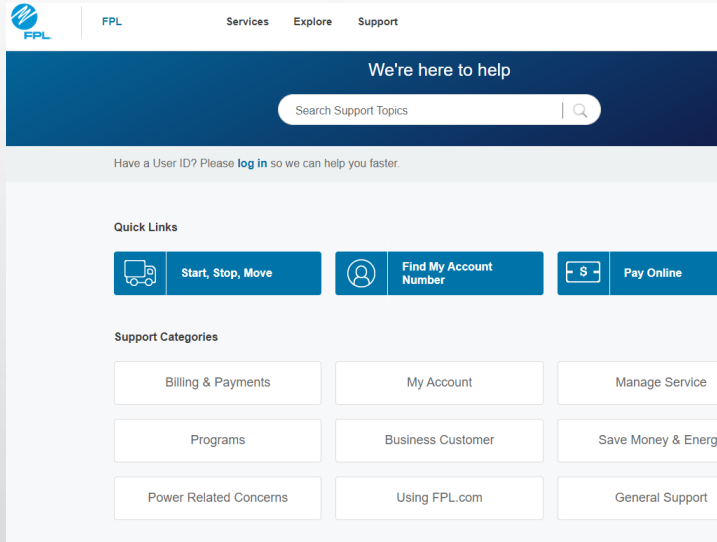
Goals:

- The need for digital literacy
- Incorporating digital literacy within all classrooms
- Building a strong virtual learning program
- Strategies to support students transitioning to virtual learning



The need for digital literacy:

- Employment
- Community Services
- Entertainment
- Education
- Safety



FPL Services Explore Support

We're here to help

Search Support Topics

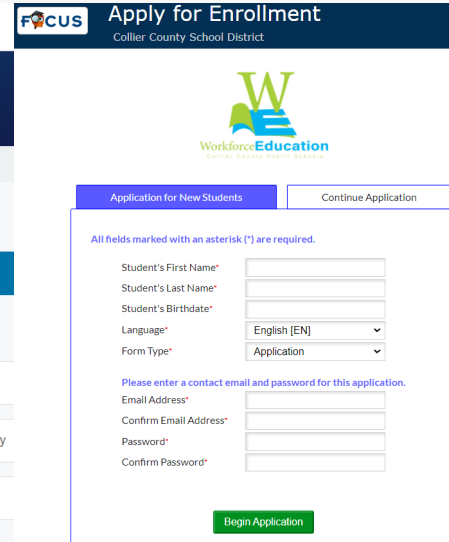
Have a User ID? Please [log in](#) so we can help you faster.

Quick Links

- Start, Stop, Move
- Find My Account Number
- Pay Online

Support Categories

- Billing & Payments
- My Account
- Manage Service
- Programs
- Business Customer
- Save Money & Energy
- Power Related Concerns
- Using FPL.com
- General Support



Apply for Enrollment
Collier County School District

Workforce Education

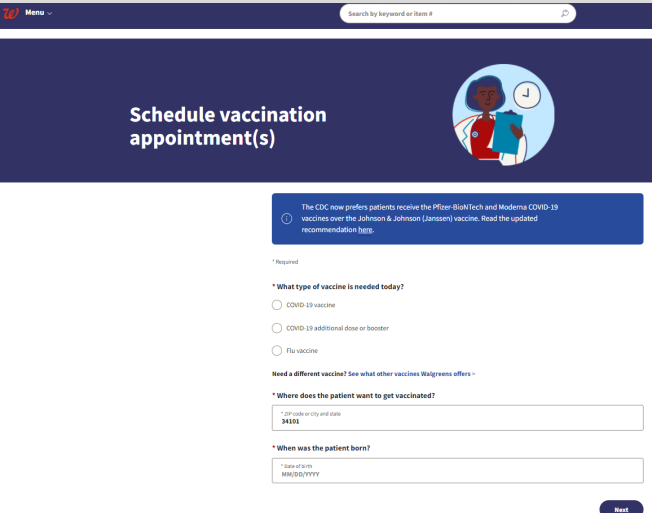
Application for New Students | Continue Application

All fields marked with an asterisk (*) are required.

Student's First Name*
Student's Last Name*
Student's Birthdate*
Language*
Form Type*

Please enter a contact email and password for this application.
Email Address*
Confirm Email Address*
Password*
Confirm Password*

Begin Application



Schedule vaccination appointment(s)

The CDC now prefers patients receive the Pfizer-BioNTech and Moderna COVID-19 vaccines over the Johnson & Johnson (Janssen) vaccine. Read the updated recommendation [here](#).

*Required

*What type of vaccine is needed today?

- COVID-19 vaccine
- COVID-19 additional dose or booster
- Flu vaccine

Need a different vaccine? See what other vaccines Walgreens offers -

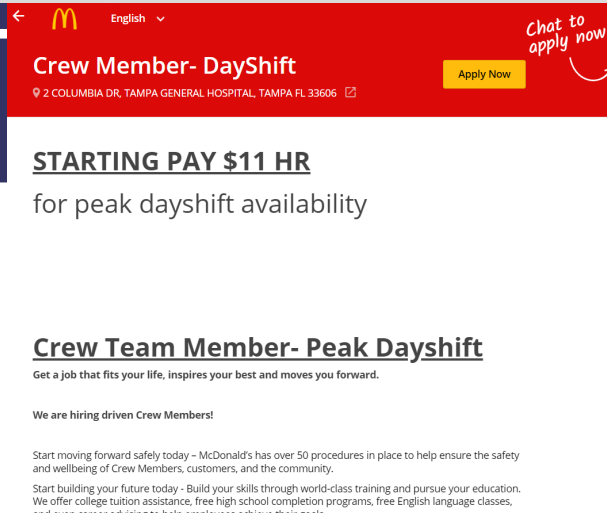
*Where does the patient want to get vaccinated?

*City or city and state
34888

*When was the patient born?

*Date of birth
MM/DD/YYYY

Next



English

Crew Member- DayShift

2 COLUMBIA DR, TAMPA GENERAL HOSPITAL, TAMPA FL 33606

Apply Now

Chat to apply now!

STARTING PAY \$11 HR

for peak dayshift availability

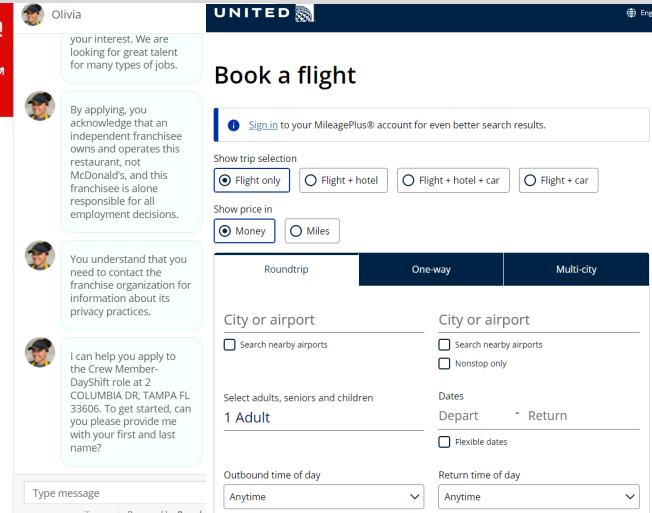
Crew Team Member- Peak Dayshift

Get a job that fits your life, inspires your best and moves you forward.

We are hiring driven Crew Members!

Start moving forward safely today - McDonald's has over 50 procedures in place to help ensure the safety and wellbeing of Crew Members, customers, and the community.

Start building your future today - Build your skills through world-class training and pursue your education. We offer college tuition assistance, free high school completion programs, free English language classes,



UNITED

Book a flight

Sign in to your MileagePlus® account for even better search results.

Show trip selection

- Flight only
- Flight + hotel
- Flight + hotel + car
- Flight + car

Show price in

- Money
- Miles

Roundtrip | One-way | Multi-city

City or airport

- Search nearby airports

City or airport

- Search nearby airports
- Nonstop only

Select adults, seniors and children

1 Adult

Dates

Depart - Return

- Flexible dates

Outbound time of day

Anytime

Return time of day

Anytime

Type message

Olivia

your interest. We are looking for great talent for many types of jobs.

By applying, you acknowledge that an independent franchisee owns and operates this restaurant, not McDonald's, and this franchisee is alone responsible for all employment decisions.

You understand that you need to contact the franchise organization for information about its privacy practices.

I can help you apply to the Crew Member- DayShift role at 2 COLUMBIA DR, TAMPA FL 33606. To get started, can you please provide me with your first and last name?

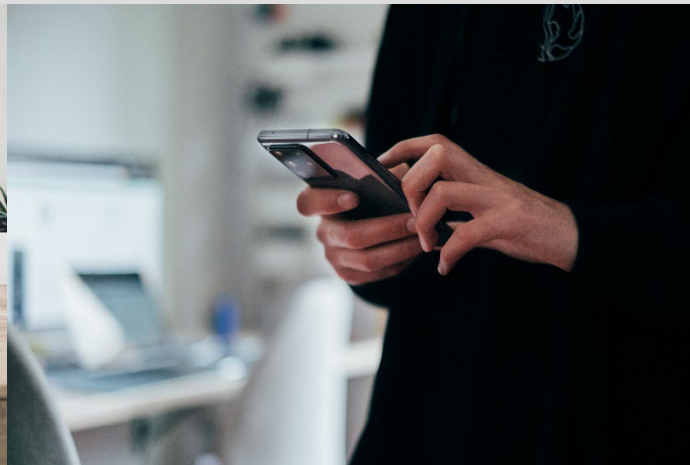
Incorporating digital literacy within all classrooms.

What does this mean?

This means helping all students navigate content using a digital device.

How is this done?

This will vary from program to program, and class to class.



Building a strong online virtual program

1. Design & Implementation of Virtual Instruction

- Learning Management System
- Curriculum
- Monitoring and Tracking of Students
- Virtual Platform
- Marketing of Virtual Instruction

2. Supporting Teachers

- To navigate instructional tools and platforms
- To deliver instruction virtually
- To engage students in a virtual world

3. Supporting Students

- To navigate instructional tools and platforms
- To engage in learning with technology
- To troubleshoot



Three key components to a distance learning program:

- Comprehensive
- Consistent
- Collaborative



Comprehensive

- Aligned to standards / WIOA
- Relevant to the adult learner
- Digital literacy
- Workforce skills
- Accessible through different devices
- Transferable from a traditional classroom environment to a virtual online learning environment



Consistent

- Promotes the progression from one level to the next
- Can be facilitated both in a traditional classroom and virtually
- Supports the transition of students from one learning environment to another
- Ease of use for the instructors and students



Collaborative

- A common platform for teachers & students to engage
- A platform for teachers to plan, share and learn together
- Provide instructors, support staff, and administrators a common tool to monitor student learning and participation
- Implement a mechanism to receive feedback on what's working and what's not



Administrative Responsibilities

- Vision and direction of the intention for a distance learning program
- Identify the instructional platform & curriculum
- Communicate the learning models
- Support for teachers
- Support for students
- Monitoring of student learning and participation
- Monitoring of instruction



Instructional Responsibilities

- Growth mindset
- Planning, delivering, and reflecting on instruction
- Supporting students
- Building relationships
- Maintaining engagement
- Providing feedback to students



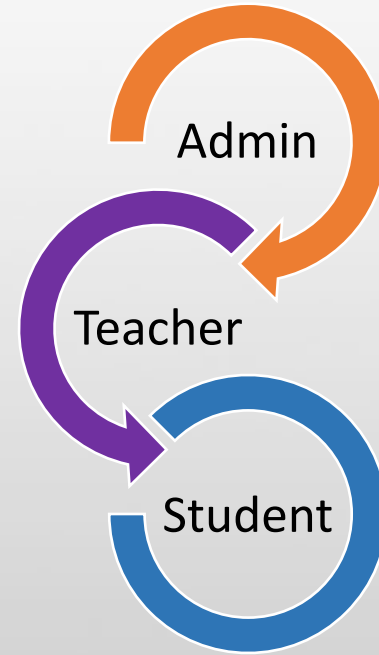
Student Support

- Communicating program expectations
- Navigating technology & applications
- Establishing classroom norms
- Communicating instructor expectations for student success
- Use of Student Ambassadors



Best Practices for Virtual Instruction

1. Supporting & Coaching Digital Literacy
2. Ensuring proficiency with technology
3. Building Relationships & Rapport
4. Establishing Norms
5. Planning & Delivering Instruction
6. Maintaining Engagement
7. Monitoring Instruction



Follow Up

Ariel Pechokas, Assistant Director of Adult Education
Collier County Public Schools
Ariel.Pechokas@collierschools.com

Valerie Guillaume, Coordinator of Adult Education
Collier County Public Schools
guilla@collierschools.com



Give IPDAE Your
Feedback!

