



INSTITUTE FOR THE PROFESSIONAL  
DEVELOPMENT OF ADULT EDUCATORS

**2020-21**

# **IPDAE Year End Recap**

[www.floridaipdae.org](http://www.floridaipdae.org)

This training event is supported with federal funds as appropriated to the Florida Department of Education, Division of Career and Adult Education for the provision of state leadership professional development activities.

## Presenters / Facilitators:

**June Rall**

IPDAE Director

**Ariel Pechokas**

Assistant Director  
Lorenzo Walker Technical College

**Yolanda Flores**

Administrative Director  
Lorenzo Walker Technical College

**Ronald Cruz**

Coordinator  
CARIBE Refugee Program  
Hillsborough County Public Schools

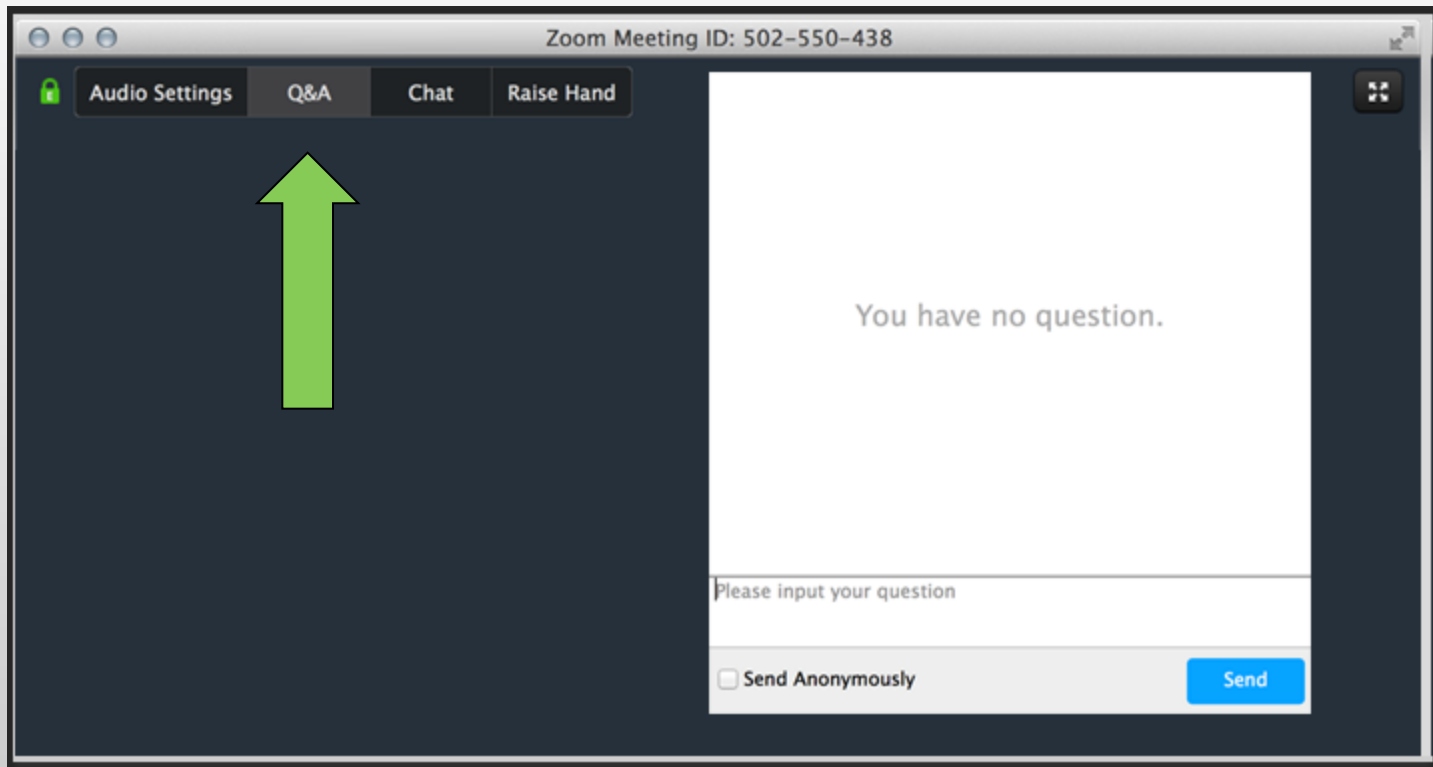
**Anne Morgan**

Coordinator  
Pinellas County Schools - CTAE

**Maria Gutierrez**

Assistant Principal  
Miami Sunset Adult Education Center

- If you have question, please type it into the **Q&A** option.



- Attendee microphones will be muted. You will be in **listen only** mode.
- Today's presentation is being **recorded** and it will be archived and available on the IPDAE website within 48 hours.

## Agenda:

- New Training Module - **IET**
- Research-Based – **REL**
- Regional Workshop – **Corrections/B.E.S.T.**
- Distance Learning – **BloomBoard co-hort**
- Overview of the **Career Pathways Institute**
- Updates - **IPDAE Platform**
- Vision Forward- **Florida Adult Learners First**



## Integration Education & Training (IET) Training Modules

### Significance of IET

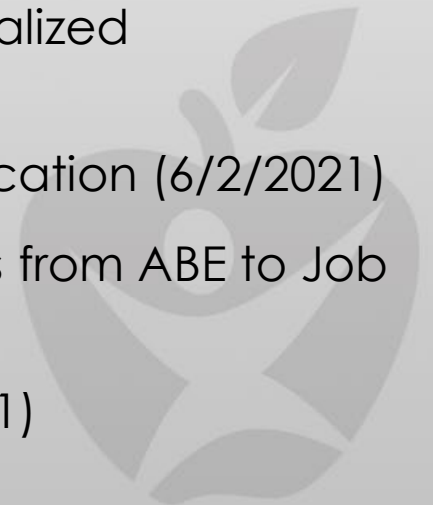
- Executive Order 19-31 signed by Governor DeSantis last year
- #1 in workforce education by 2030
- IET: An instructional strategy for Career Pathways that enables credential attainment and can lead directly to employment in high-demand, high-wage jobs!



## Integration Education & Training (IET) Training Modules

### Highlighted Trainings on IET:

- Developing a Single Set of Learning Objectives in IET (10/14/2020)
- Intro. to Entrepreneurship & Innovation – Parts 1 & 2 (12/2/2020 & 1/13/2021)
- The Beginner's Guide to IET (2/17/2021)
- Moving IET Awareness for Beginners to Contextualized Application in any Program (5/12/2021)
- Building a Robust Career Pathway for Adult Education (6/2/2021)
- Student Progression Timeline: Engaging students from ABE to Job Placement (6/9/2021)
- IET & Community/Industry Partnerships (6/16/2021)



## Integration Education & Training (IET) Training Modules

Will develop IET modules for 2021-22 based on an overview created this year.

### **Subsequent modules will expand on IET topics to include:**

- 3 required IET components
- Additional requirements for consideration
- Breaking down concurrent and contextualized instruction
- Selecting occupationally relevant instructional materials for basic skills instruction, workforce preparation and workforce training
- Digging deeper into creating single sets of learning objectives under various career pathways
- Highlighted IET programs under each of the 5 IET modules

## **REL- Regional Educational Laboratory- Southeast** **Recruitment, Retention, Persistence**

**REL Study conducted with Pinellas: June – October 2020**

***Starting intake, orientation and instruction with goal setting and matching students to classes and classwork based on their needs. Addressing negative attitudes toward education.***

- 4 Teachers, 2 ABE/GED, 2 ESOL Classes, 28 students
- Conducted during summer and fall terms
- Teachers received stipend for data collection
- Experimental(strategy applied) and control groups





## Collected instructional hours for both groups

- **Experimental group**
  - 984 hrs.
- **Control group**
  - 539 hrs.

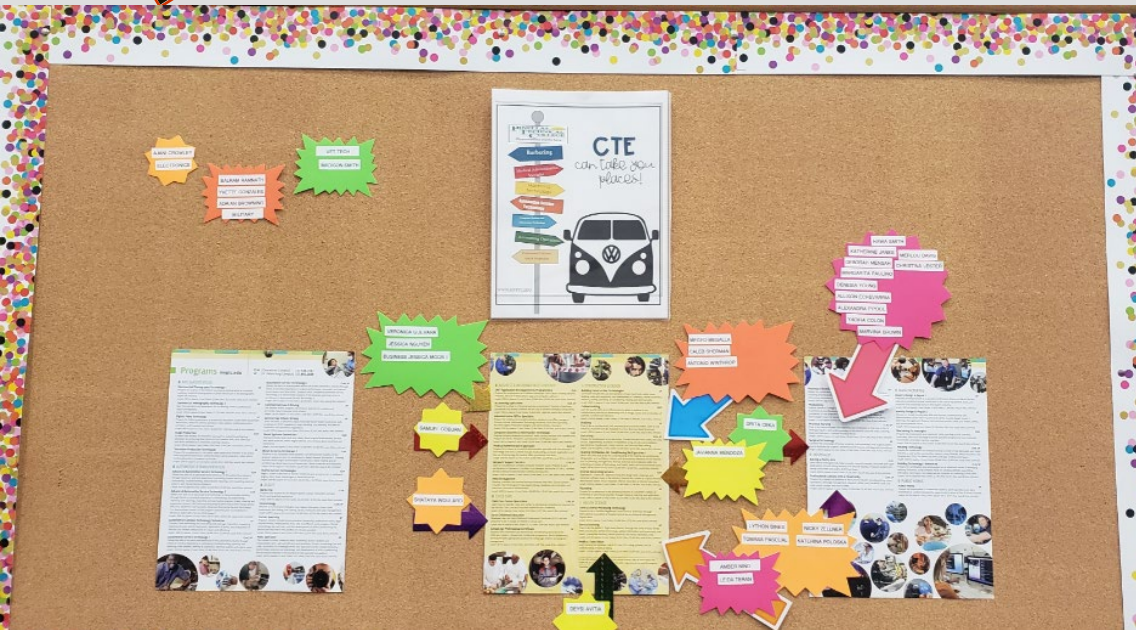
Student Data						
Directions	Keep a list of the students that you assign to each ID to align their pre- and post strategy data	Type in hours of instruction at the beginning (Pre-Experimental) and at the end (Post-Experimental) for your Experimental Group (the group trying out the strategy) below. Erase any sample data below before you begin.		Type in hours of instruction at the beginning (Pre-Control) and at the end (Post-Control) for your Control Group (the group NOT trying out the strategy) below. Erase any sample data below before you begin.		
		Pre-Experimental	Post - Experimental	Pre-Control	Post - Control	
		1	0	20	0	1
		2	4	25	0	27
		3	0	40	0	8
		4	1	60	0	27
		5	0	63	0	18
		6	0	72	0	36
		7 E	19	145	9	41
		8 E	0	147	40	55
		9 E	3	73	0	114
		10 E	8	92	1	30
		11 E	7	63	2	19
		12 E	5	67	3	51
13 E	5	55	2	71		
14 E	4	62	6	41		

Results		
Baseline equivalence determines whether groups had significant differences in achievement before you implemented your strategy.	The confidence is the certainty of the effect related to an estimate of the range of the effect size if repeated samples were taken. If the range crosses zero there is not much certainty that this effect would hold true in other samples.	Effect size shows differences in average scores between the control and experimental group.
Is there baseline equivalence?	Confidence in the effect size?	Effect Size
Yes	Yes	0.97
Refer to the <i>Reflection Worksheet</i> for additional information about how to interpret the results.		

## First Steps: Pre- Study Survey of Teachers

- Student success strategies that work & foster student resilience
- Intake procedures that establish classroom expectations
- Processes that assist students to establish goals
- How to make classroom environment positive
- Strategies to promote positive interactions & dispel previous negative experiences
- Fostering teacher – student relationships with mentoring interactions
- Establish classroom visuals that emphasis student goals and future steps

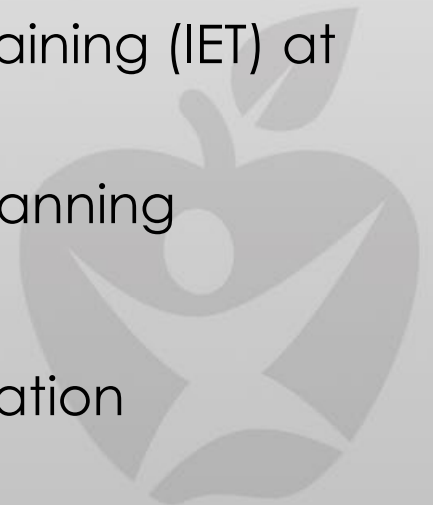




## Regional Corrections Workshops 2021-2022

### 4 Regional Workshop - Areas of Focus:

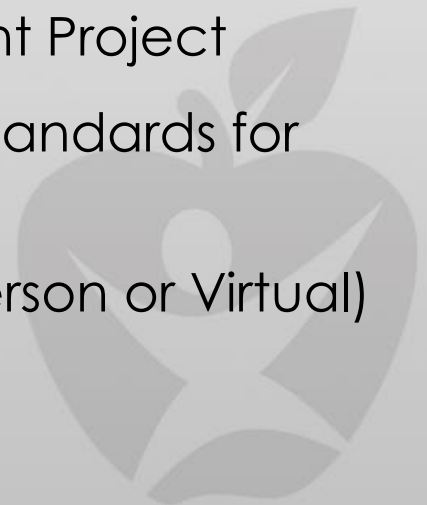
- Deeper Dive into Contextualized Instruction
- Exploring Integrated Education and Training (IET) Programs Appropriate for Corrections
- Developing Single Set of Learning Outcomes
- Implementing Integrated Education and Training (IET) at the Correctional Setting
- Contextualized Resources and IET Lesson Planning
- Optional: IET Technical Assistance
- B.E.S.T. Standards Alignment for Adult Education



## **B.E.S.T. Standards Alignment for Adult Education**

### **8 Regional Workshops - Areas of Focus:**

- Gleaning Insights from B.E.S.T. Standards through Side-by-Side Comparison
- Capitalizing on the Features of the B.E.S.T. Standards
- Deeper Dive into Alignment Project
- Results and Recommendations of Alignment Project
- Workforce and IET Integration into B.E.S.T. Standards for Adult Education
- Implications for Classroom Instruction (In-person or Virtual)





## The Need & Goal

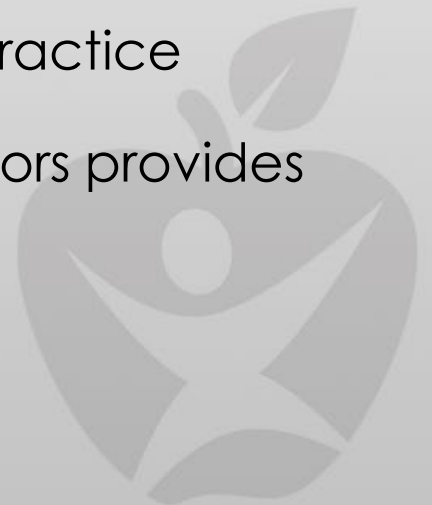
### **Building of Teacher Digital Instructional Skills:**

- Relevant professional development
- Focus on adult educators
- Incorporate and develop digital instructional skills and strategies
- Promotes the integration of learning within instructors practice



## **BloomBoard Pilot**

- 2 month pilot
- Web-based professional development platform
- Based on completing of micro-credentials
- Allows teachers to work and learn within their practice
- Integrating learning strategies within their practice
- Attainment of micro-credentials for educators provides a system for Master In-service Points



## Key Take Aways

- Flexible program
- Relevant practices
- Activities based on real world application
- Need of establishing expectations and norms
- Building of student relationships
- Real world application







2021

# CAREER PATHWAYS INSTITUTE

A Virtual Event in Workforce Advancement  
for Adult Education to



Florida's Workforce Education Initiative

**View the Recordings at**

[https://www.youtube.com/watch?v=SljKFUWPol&list=PLmir3UJkhMCm0hbxu\\_AdFlh-EDdapKctS](https://www.youtube.com/watch?v=SljKFUWPol&list=PLmir3UJkhMCm0hbxu_AdFlh-EDdapKctS)

Key and impactful segments related to  
advancing career pathways for adult educators.

## Impacting the Adult Educator

### Topics Include:

- AE Funding and Collaborative Networking
- Shifting to IET Models
- Empowering AE Through Data
- The Adult Educator Perspective in Practice



## The Adult Student In Focus

### Topics Include:

- Strategies to Break Down Barriers Faced by AE Students
- Retention Strategies from Research to Practice
- The Importance of Articulation Agreements
- The Adult Student Perspective in Practice



## The Impacts of Employers & Industry

### Topics Include:

- Industry Partner Relationships
- The Power of Apprenticeship Programs
- Career & Workforce Support Opportunities
- The Employer Perspective in Practice



## Professional Development Assessment Survey

IPDAE is currently conducting a professional development assessment survey to gain a better understanding of the needs of the field.

**<https://www.surveymonkey.com/r/NV3VG7C>**

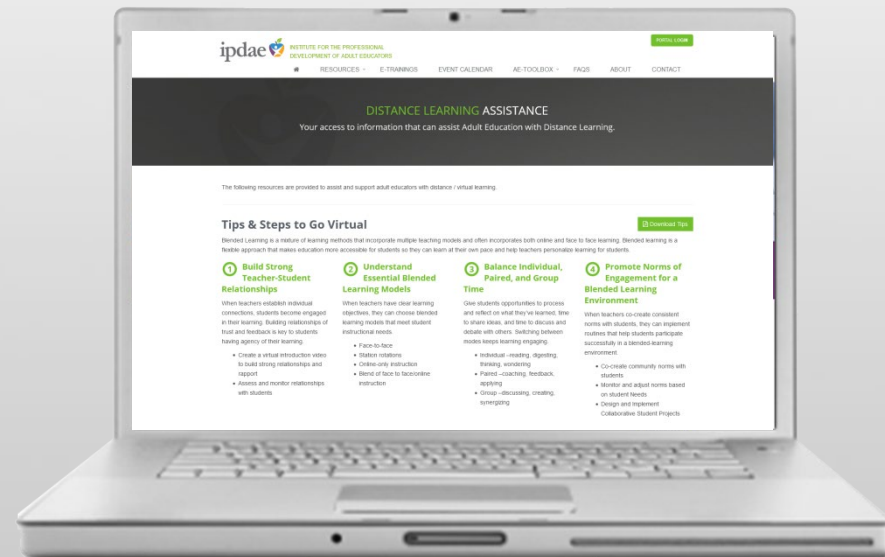


## Distance Learning Assistance

Accessible via the AE-TOOLBOX at [www.FloridaIPDAE.org](http://www.FloridaIPDAE.org)

### NEW! Distance / Online Learning Content Available:

- Tips & Steps to Go Virtual
- Transitioning to Learning Online Roadmap
- Administrative Best Practices for Monitoring Virtual Courses
- FLDOE Best Practices for Distance Learning

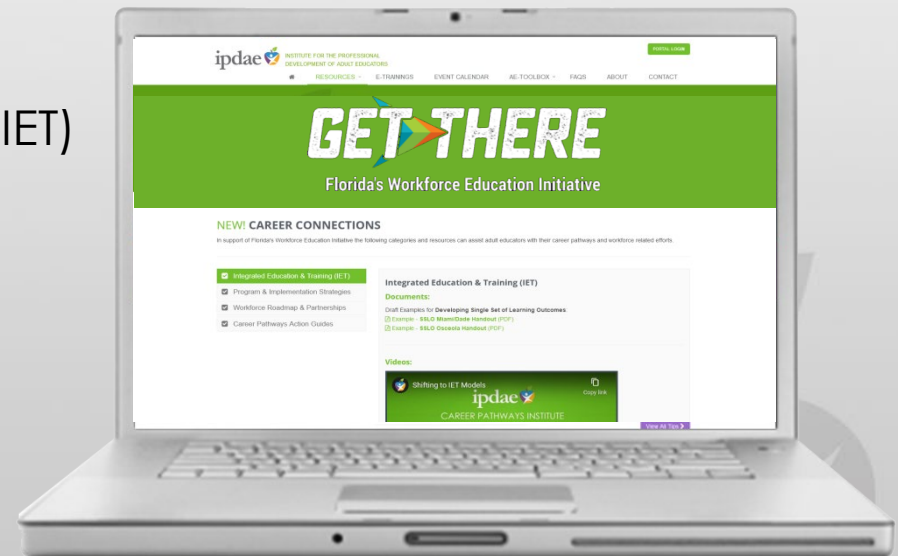


## Adult Education Career Pathways (AECP)

A focus on career and workforce resources and support.  
Accessible via the AECP channel at **[www.FloridalPDAE.org](http://www.FloridalPDAE.org)**

### NEW! Workforce Education and Career Connections Content:

- Integrated Education & Training (IET)
- Program & Implementation Strategies
- Workforce Roadmaps & Partnerships
- Career Pathways Action Guides



## **Priority 1:**

Promote regional partnerships to ensure comprehensive approaches that result in improved learner outcomes.

## **Priority 2:**

Expand the state's talent pipeline through attainment of credentials of value and acquisition of postsecondary certifications, industry-recognized credentials, and degrees.

## **Priority 3:**

Ensure all learners receive high quality instruction that prioritizes measurable labor market needs and outcomes while working to eliminate equity and achievement gaps in the community.

## **Priority 4:**

Incent, measure, and support enhanced program effectiveness.





WE WANT  
**YOUR**  
FEEDBACK

