



INSTITUTE FOR THE PROFESSIONAL  
DEVELOPMENT OF ADULT EDUCATORS

# Active Learning in the Adult Classroom

[www.floridaipdae.org](http://www.floridaipdae.org)

This training event is supported with federal funds as appropriated to the Florida Department of Education, Division of Career and Adult Education for the provision of state leadership professional development activities.

# Welcome!



June Rall



**Jenna Moniz, NBCT, M.S.**

Department Chair, Pre-College Academic Studies  
Atlantic Technical College  
Broward County Public Schools

## 2017-2018 Adult Education Curriculum Frameworks

### Adult Basic Education (ABE)

- [Adult Basic Education Language Arts](#) (RTF)
- [Adult Basic Education Mathematics](#) (RTF)
- [Adult Basic Education Reading](#) (RTF)

### Adult General Education for Adults with Disabilities

- [Adult General Education for Adults with Disabilities](#) (RTF)

### Adult High School

- [Adult High School](#) (RTF)
- [Adult High School \(Co-Enrolled\)](#) (RTF)
- [Approved Co-Enrolled Adult High School Course List](#) (RTF)

### Applied Academics for Adult Education (AAAE)

- [Applied Academics for Adult Education](#) (RTF)

### English for Speakers of Other Languages (ESOL)

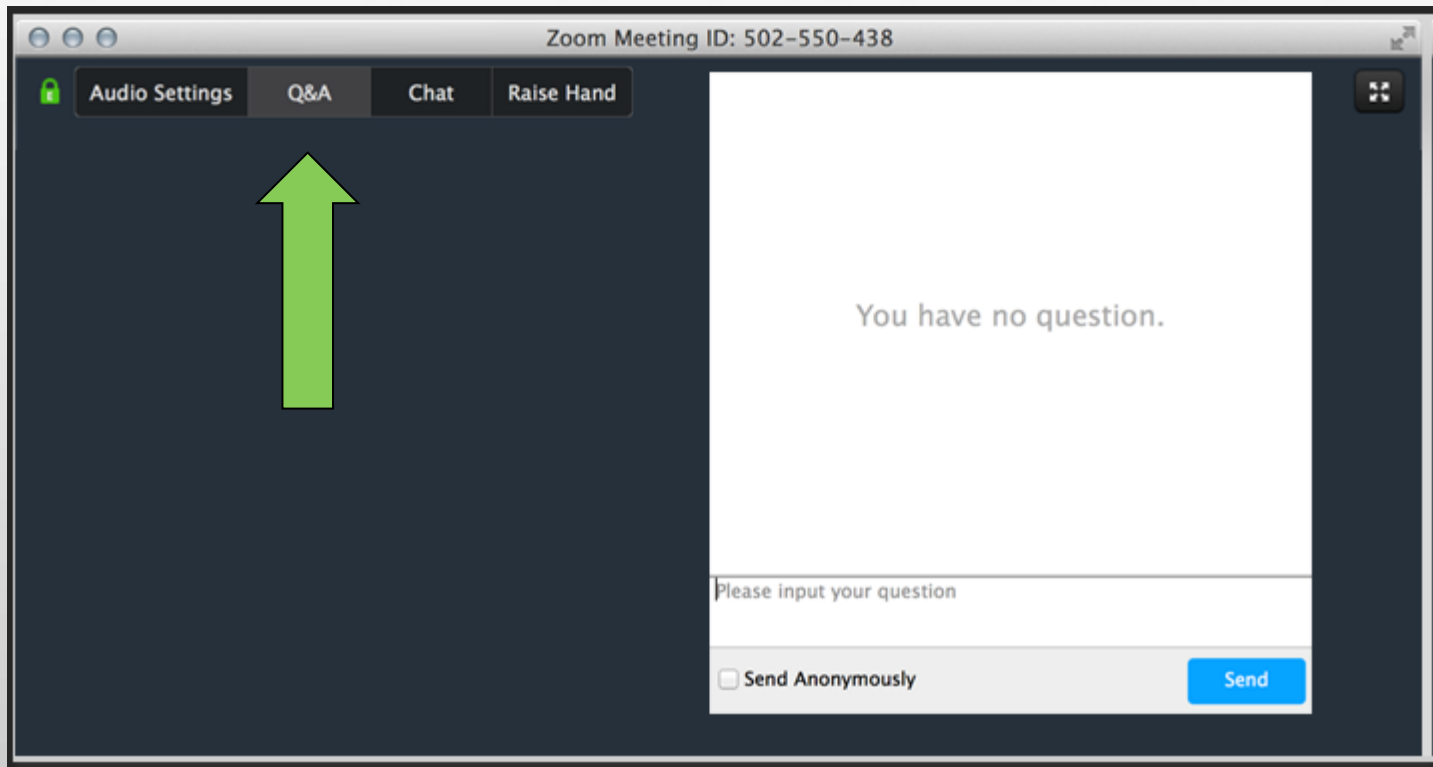
- [Adult English for Speakers of Other Languages](#) (RTF)
- [Adult ESOL College and Career Readiness](#) (RTF)
- [Adult ESOL Literacy Skills](#) (RTF)
- [Citizenship](#) (RTF)
- [English Literacy for Career and Technical Education \(ELCATE\)](#) (RTF)

### GED® Preparation Program

- [GED® Reasoning through Language Arts](#) (RTF)
- [GED® Science](#) (RTF)
- [GED® Social Studies](#) (RTF)
- [GED® Mathematical Reasoning](#) (RTF)
- [GED® Preparation Comprehensive](#) (RTF)
- [GED® Integrated Preparation Comprehensive](#) (RTF)

Share  
the  
Tools!

- If you have a question, please type it into the **Q&A** option.



- Attendee microphones will be muted. You will be in **listen only** mode.
- Today's presentation is being **recorded**. It will be archived and available on the IPDAE website within 48 hours.

# Who's Here?

- Use the chat box to shout out the school and/or district you represent!



In this session, we will explore:

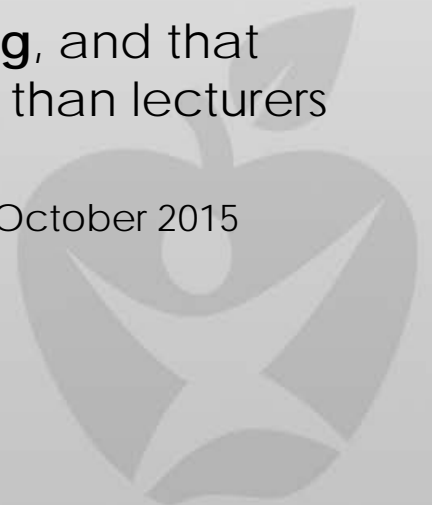


- How **environments** can effect learning
- **Receptive and Productive Language** (Input and Output) when learning new information
- **Active learning** strategies for Listening and Reading

# What is Active Learning?

- “We use ‘active learning’ to describe a classroom approach which acknowledges that **learners are active** in the learning process by building knowledge and understanding in response to learning opportunities provided by their teacher. This contrasts with a model of instruction whereby knowledge is imparted or transmitted from the teacher to the students.”
- Students take **increasing responsibility for their learning**, and that teachers are enablers of activators of learning, rather than lecturers or deliverers of ideas.

-Cambridge International Examinations, October 2015





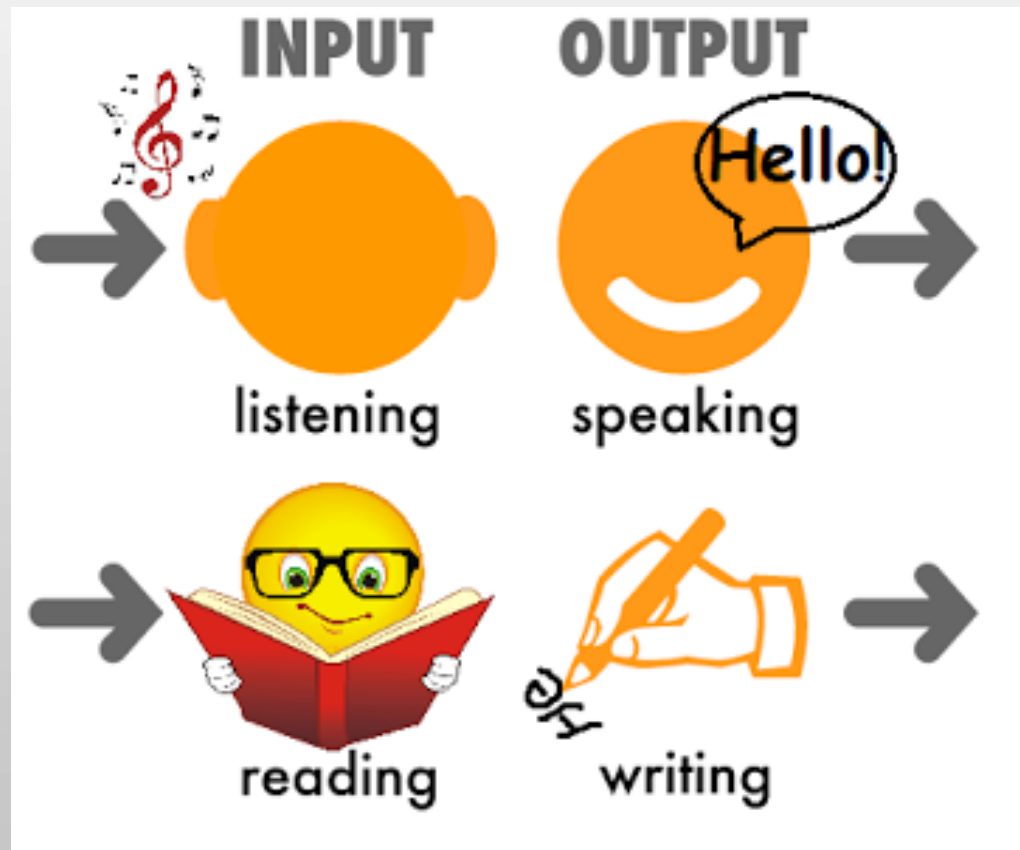
# New Information

---

INPUT AND OUTPUT



# Receptive and Productive Language





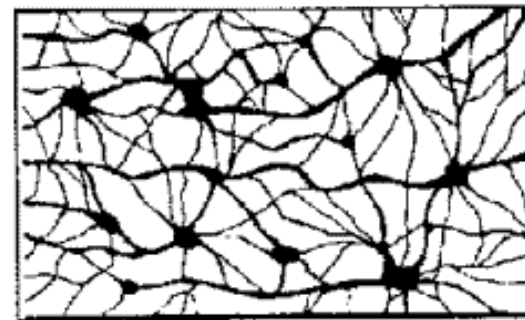
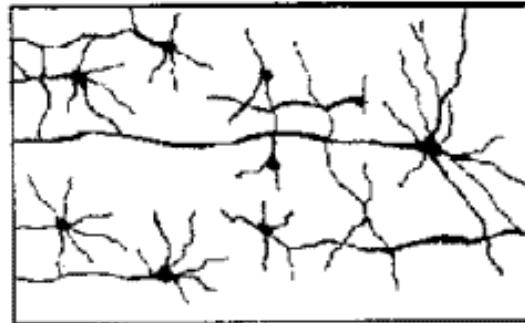
The human **brain** consists of about one billion **neurons**. Each **neuron** forms about 1,000 connections to other **neurons**, amounting to more than a trillion connections

# Brain Plasticity

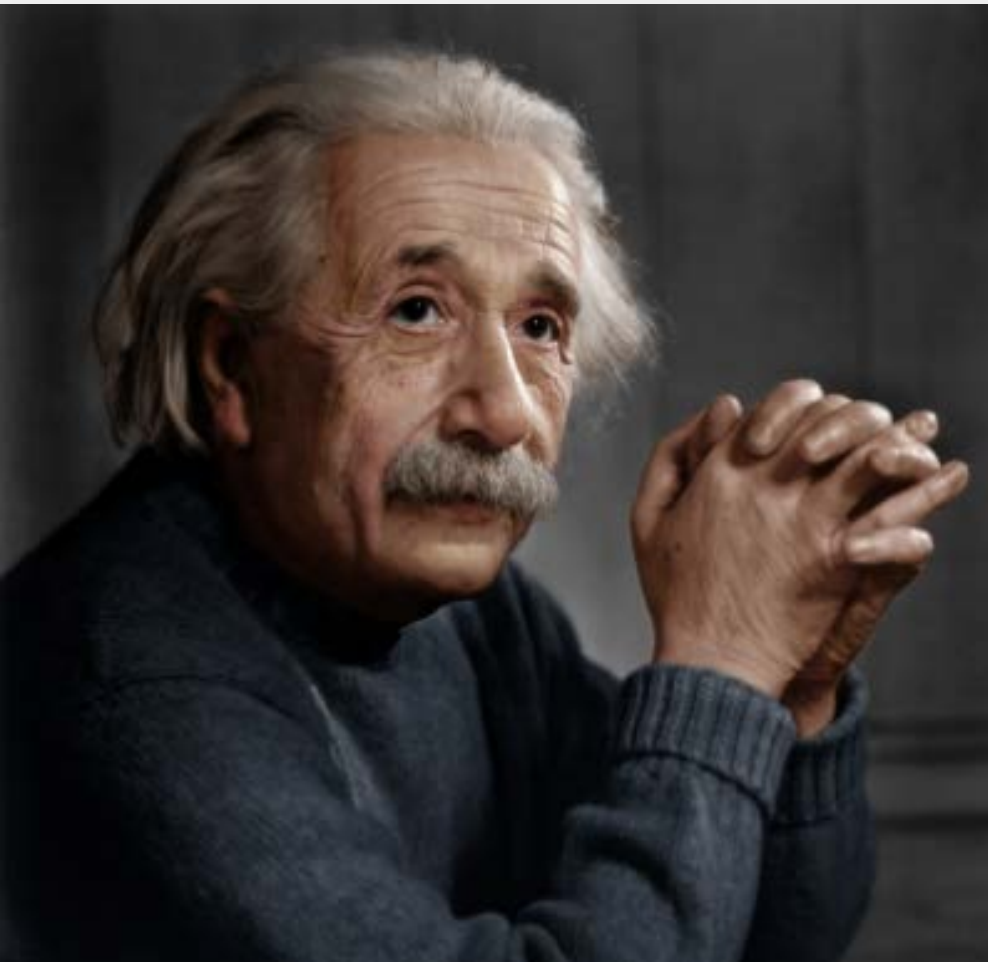
## **It Gets Written**

Marian C. Diamond

University of California, Berkeley, 1989

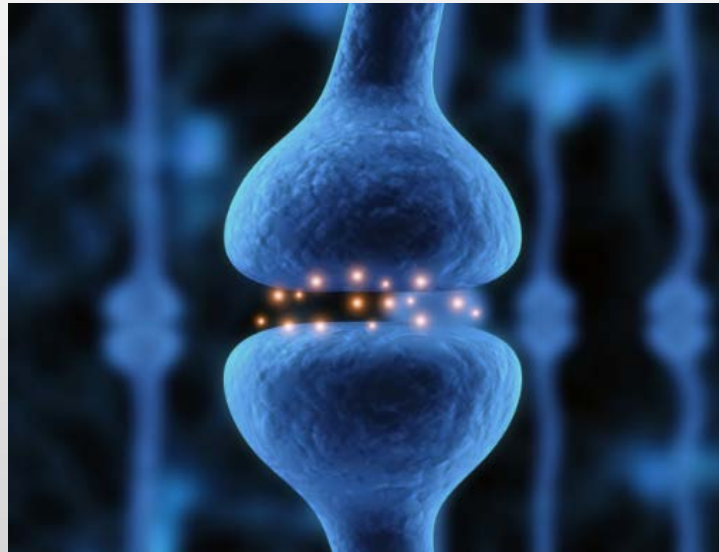


# The Power of Plasticity





# Environment is Everything



**Cortisol  
Adrenaline  
Epinephrine**

**Serotonin  
Oxytocin  
Endorphins**

## Emotions

- Flow
- Eustress
- I + 1



# Listening

---



# Teacher Talk

IS MY SPEECH  
COMPREHENSIBLE?



SLOW DOWN

ENUNCIATE

POINT/  
DEMONSTRATE

USE WAIT TIME

USE GESTURES

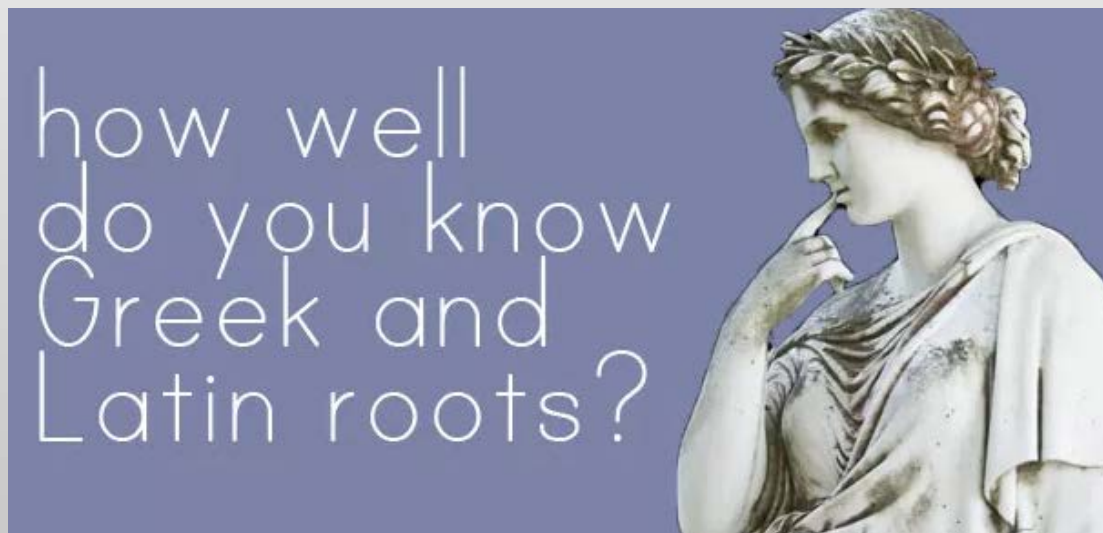
USE CONCISE  
LANGUAGE

REPEAT/  
PARAPHRASE

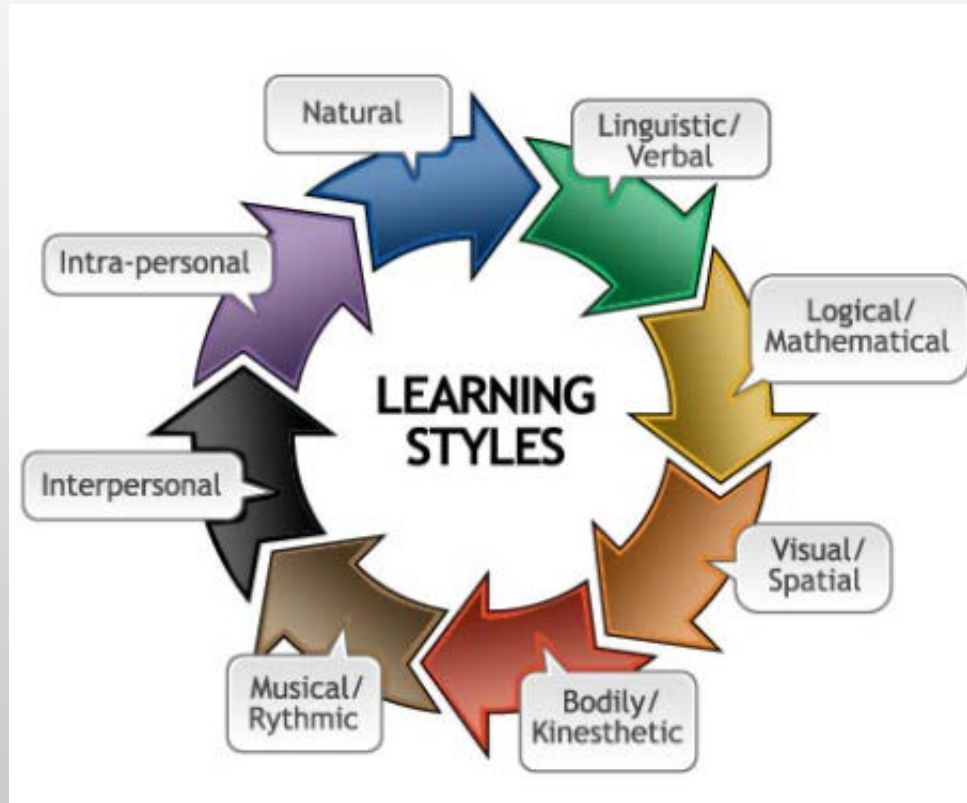




**“Do I know this word in Kreyol/  
French/Spanish/Portuguese . . . ?”**



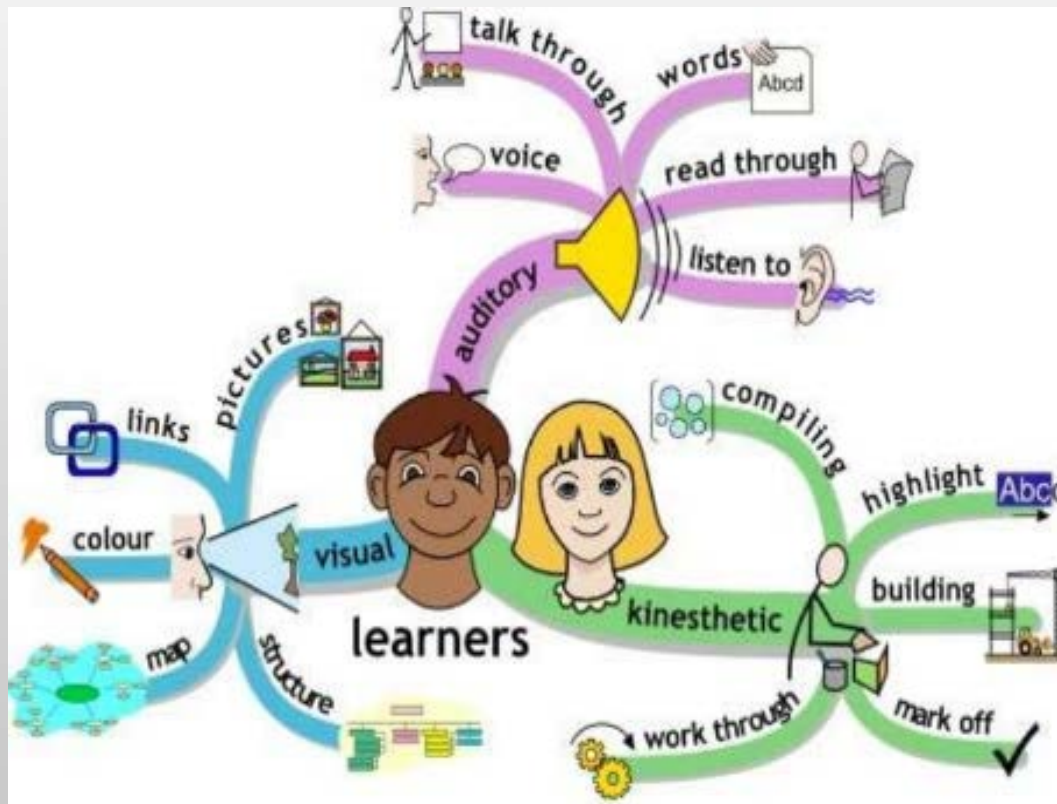
# Teach to Students' Styles



. . . Not just your Own



# The Channels of Learning



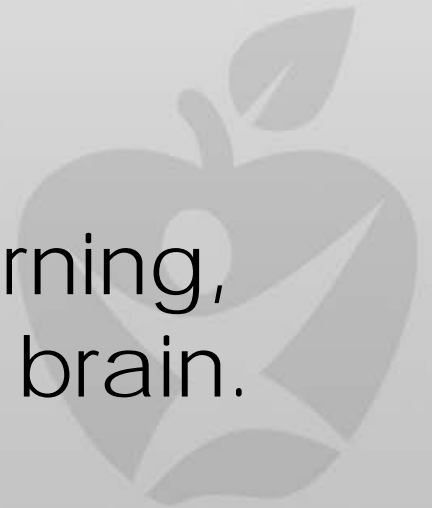
**VAK**  
**VKA**  
**KAV**  
**KVA**  
**AKV**  
**AVK**

# It's not about You

- "We teachers tend to teach to our own brains." –Bill McBride



- The more senses we use in learning, the greater the imprint on the brain.



# New Information

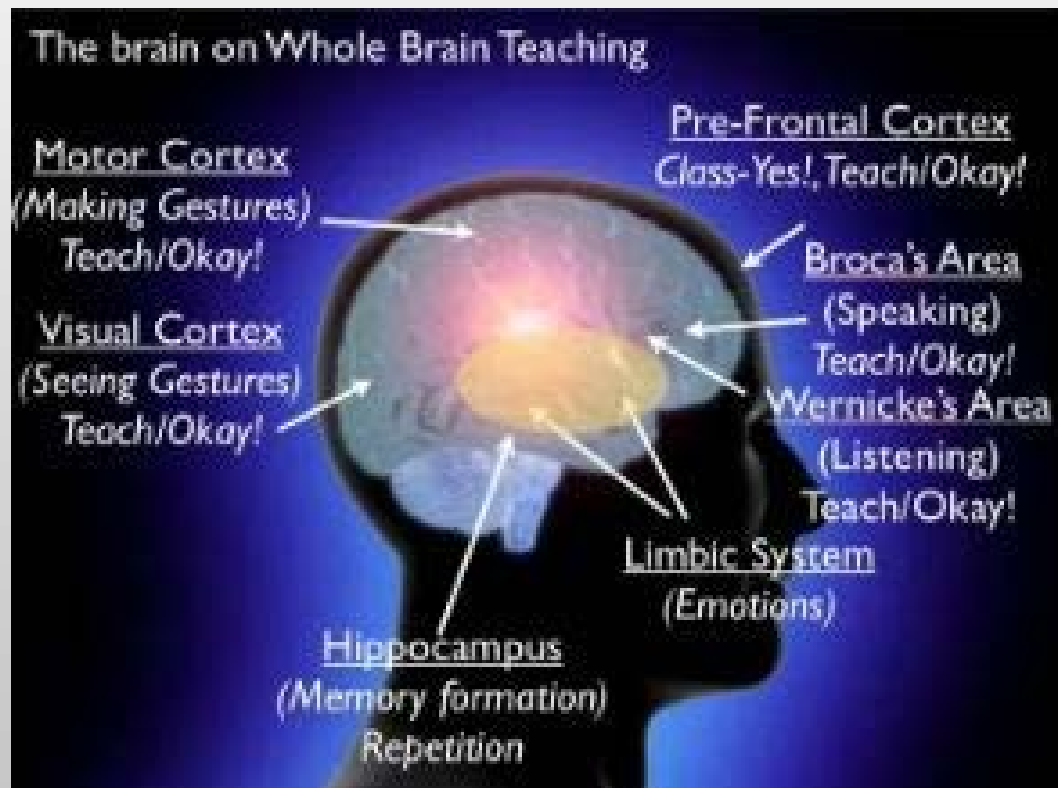


## **TEACH-OKAY**

- **SPEAK BRIEFLY**
- **EDUCATIONAL CHUNKS**
- **TEACH NEIGHBOR USING WORDS AND GESTURES**
- **CALL BACK WITH CLASS-YES**



# TEACH-OKAY



# Notes TM



Notes Taking (Teacher)	Making (Me)
<ol style="list-style-type: none"><li>1. Facts</li><li>2. Examples</li><li>3. People/Dates</li><li>4. Vocab words</li><li>5. Equations</li><li>6. Formulas</li></ol>	<ol style="list-style-type: none"><li>1. Thoughts</li><li>2. Feelings</li><li>3. Pictures</li><li>4. Questions</li></ol>

\*Use symbols and abbreviations whenever possible

# Notes TM

Taking Notes (T)	Making Notes (M)
Several high-profile Twitter accounts were hacked, including Barack Obama.	I wonder what kinds of things the hackers did with access to those accounts.
Logging in to something through another website is usually a scam.	I'll have to watch out for that.
Don't use the same password for everything, or a hacker has access to everything.	Oops... I need to fix that.

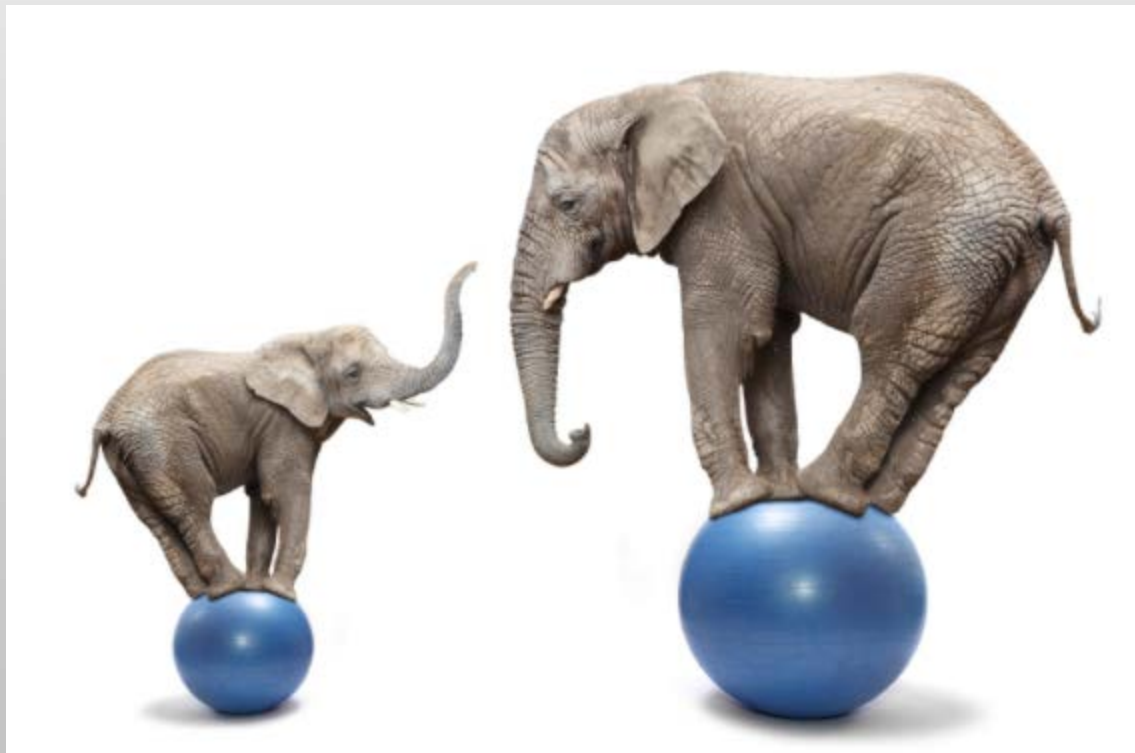




# Whole Group

## Flexible Groups

### Independent



# Reading

---



**CLOSE YOUR EYES**



# The Mind thinks in Images



# CCR Skills

- Regular practice with complex texts and their academic language
- Reading, writing, and speaking grounded in evidence from texts, both literary and informational
- Building knowledge through content-rich nonfiction



<b>CCR.RE.ABE.10: Read and comprehend complex literary and informational text independently and proficiently.</b>			
<b>NRS Level 1</b>	<b>NRS Level 2</b>	<b>NRS Level 3</b>	<b>NRS Level 4</b>
<b>GE: 0.0–1.9</b>	<b>GE: 2.0–3.9</b>	<b>GE: 4.0–5.9</b>	<b>GE: 6.0–8.9</b>
<p><b>10.1. Actively engage in group reading activities with purpose and understanding; with prompting and support, read prose and poetry of approximate complexity for NRS Level 1.</b></p> <p>a) Actively engage in group reading activities with purpose and understanding; with prompting and support, read informational text appropriate for NRS Level 1.</p>	<p><b>10.2. Read and comprehend literature, including stories and poetry, of appropriate complexity for NRS Level 2 proficiently.)</b></p> <p>a) Read and comprehend informational texts, including history/social studies, science and technical texts, of appropriate complexity for NRS Level 2.</p>	<p><b>10.3. Read and comprehend literature, including stories, dramas, and poetry, of appropriate complexity for NRS Level 3, independently and proficiently.</b></p> <p>a) Read and comprehend informational texts, including history/social studies, science and technical texts, of appropriate complexity for NRS Level 3.</p>	<p><b>10.4. Read and comprehend literature, including stories, dramas, and poems, of appropriate complexity for NRS Level 4, independently and proficiently.</b></p> <p>a) Read and comprehend literary non-fiction of appropriate complexity for NRS Level 4 complexity.</p>



# Reading Complex Texts



- Scaffold toward Independence (GRR)
- Read between the lines  
(Implicit –vs- Explicit)
- Build Background Knowledge



# Good Readers . . .

<b>Read (chunk)</b>	
<b>Stop</b>	
<b>What did I read?</b> <b>W?W?W?W?W?H?</b>	
<ul style="list-style-type: none"><li>• Clarify</li><li>• Summarize</li><li>• Visualize</li><li>• Record</li><li>• Reteach</li></ul>	

- Interact with text
- Chunk reading
- Reread
- Ask Questions
- Read between the lines





# Active Learning Resources

- <http://www.usf.edu/atle/documents/handout-interactive-techniques.pdf>
- <https://teaching.berkeley.edu/active-learning-strategies>
- <http://www.usf.edu/atle/documents/handout-interactive-techniques.pdf>
- <https://mcgraw.princeton.edu/active-reading-strategies>
- <http://www.calstatela.edu/dept/chem/chem2/Active/main.htm>
- <https://teachingcommons.stanford.edu/resources/learning-resources/promoting-active-learning>



# Great PD Offerings!



Coming  
Soon!

## New Face-to Face workshops

- GED® Social Studies and Science
- Evidence-Based Literacy Strategies for Adult Educators
- Strengthening Mathematics Foundations and Classroom Instruction for CCRS
- PD for the Correctional Setting
- CASAS e-Test® Training

[floridaipdae.org](http://floridaipdae.org)



## On Demand

- Grab-n-Go Videos
- E-trainings
- Lesson Plans
- Handbooks
- New Webinars

**Jenna Moniz**

Jenna.moniz@browardschools.com

Atlantic Technical College

Broward County Public Schools

(754) 321-5248

